

The DMI Changer (DMIWIN.EXE) can be used via Windows to manually modify the DMI (Desktop Management Interface) Type 1 and Type 3 data for 886LCD-M BIOS and 986LCD-M BIOS. The DMI Type 0 and Type 2 are reserved by Kontron and can not be modified.

For the 986LCD-M the BIOS shall be version 10 or above and for the 886LCD-M the BIOS shall be version 32 or above.

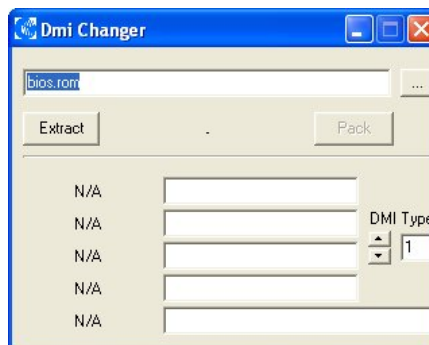
DMIWIN.EXE Procedure:

The BIOS ROM file shall be available to the DMI Changer.

Execute the DMIWIN.EXE

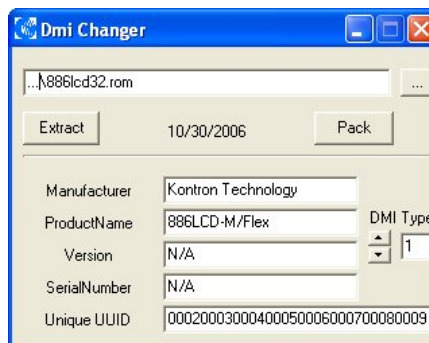
Browse for the BIOS.ROM file

(In this example called 886LCD32.rom)



Click the Extract button

Change data as requested

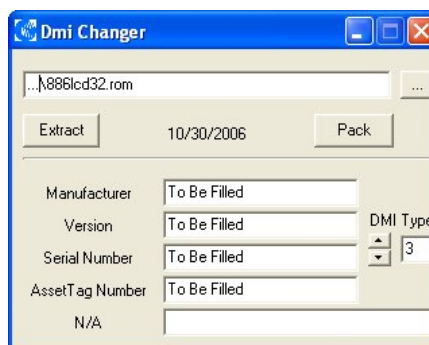


Maximum:

18 ASCII
13 ASCII
8 ASCII
8 ASCII
32 Hex

Increase DMI Type to 3

Change data as requested



Maximum:

12 ASCII
12 ASCII
12 ASCII
12 ASCII

Click the Pack button

A new.rom file will be located in the same directory as the original bios.rom file. The new.rom can be renamed (if requested) and burned into the target board by use of our standard BIOS tools.

The DMI.EXE can be used from a DOS prompt to manually modify DMI Type 1 and Type 3 data for 886LCD-M BIOS and 986LCD-M BIOS, however it can also be used via windows. The DMI.EXE can also be used to transfer data from a Script file to the DMI area in the BIOS.

DMI.EXE Procedure:

```

C:\>dmi

Usage:      DMI Scriptfile <Switches>                        KT DmiTool 1.02

<Switches>
/m1          Let you enter the Manufacturer in type DMI 1 manually
/p1          Let you enter the Product Name in type DMI 1 manually
/v1          Let you enter the Version in type DMI 1 manually
/s1          Let you enter the Serial Number in DMI type 1 manually
/u          Let you enter the Unique UUID in DMI type 1 manually
/m3          Let you enter the Manufacturer in type DMI 3 manually
/v3          Let you enter the Version in type DMI 3 manually
/s3          Let you enter the Serial Number in DMI type 3 manually
/a3          Let you enter the Asset Tag Number in DMI type 3 manually

ex. dmi.exe /m1 /s1 /s3

C:\>

```

When using the Switches please notice the maximum number of characters listed in the table below. One character string is terminated by <ret> key.

The Script-file shall contain the following text file:

```

'Bios='           'bios10.rom'
'Type='           '1'
'Manufacturer='    'Kontron Technology'
'ProductName='     '986LCD-M/mITX'
'Version='         '12345678'
'SerialNumber='    '87654321'
'UniqueUUID='     '0123456789ABCDEF0123456789ABCDEF'
'Type='           '3'
'Manufacturer='    'To Be Filled'
'Version='         'To Be Filled'
'SerialNumber='    'To Be Filled'
'TagNumber='       'To Be Filled'

```

The lines in **Bold** shall always be present and Bios= shall be the name of the BIOS ROM-file. The other lines (showing the default values) can be removed as requested if no change shall be made to the default DMI data or they can be modified. When modifying the data please notice the type and maximum number of Characters.

Function	Default	Type	No of char.
'Manufacturer='	'Kontron Technology'	ASCII	18
'ProductName='	'986LCD-M/mITX'	ASCII	13
'Version='	'12345678'	ASCII	8
'SerialNumber='	'87654321'	ASCII	8
'UniqueUUID='	'0123456789ABCDEF0123456789ABCDEF'	Hex	32
'Manufacturer='	'To Be Filled'	ASCII	12
'Version='	'To Be Filled'	ASCII	12
'SerialNumber='	'To Be Filled'	ASCII	12
'TagNumber='	'To Be Filled'	ASCII	12